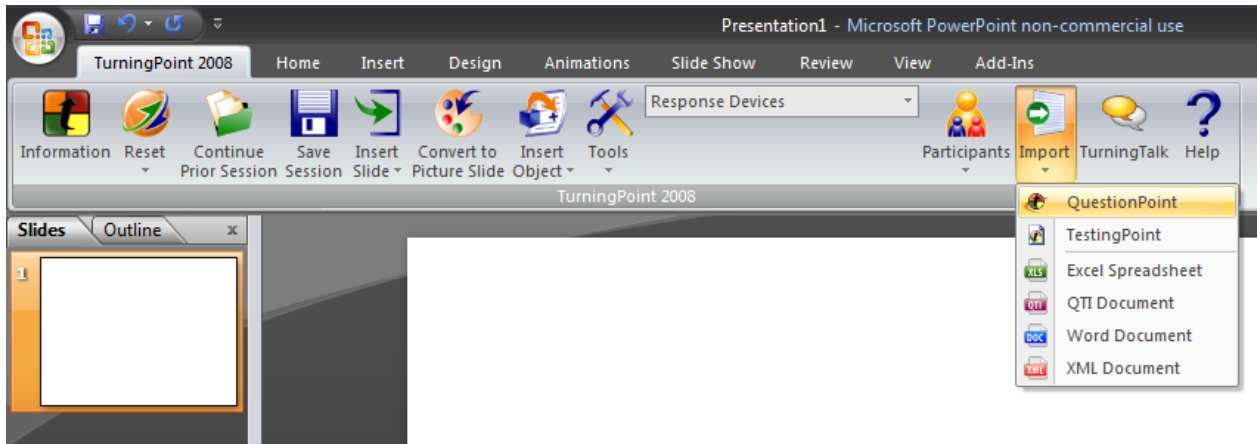
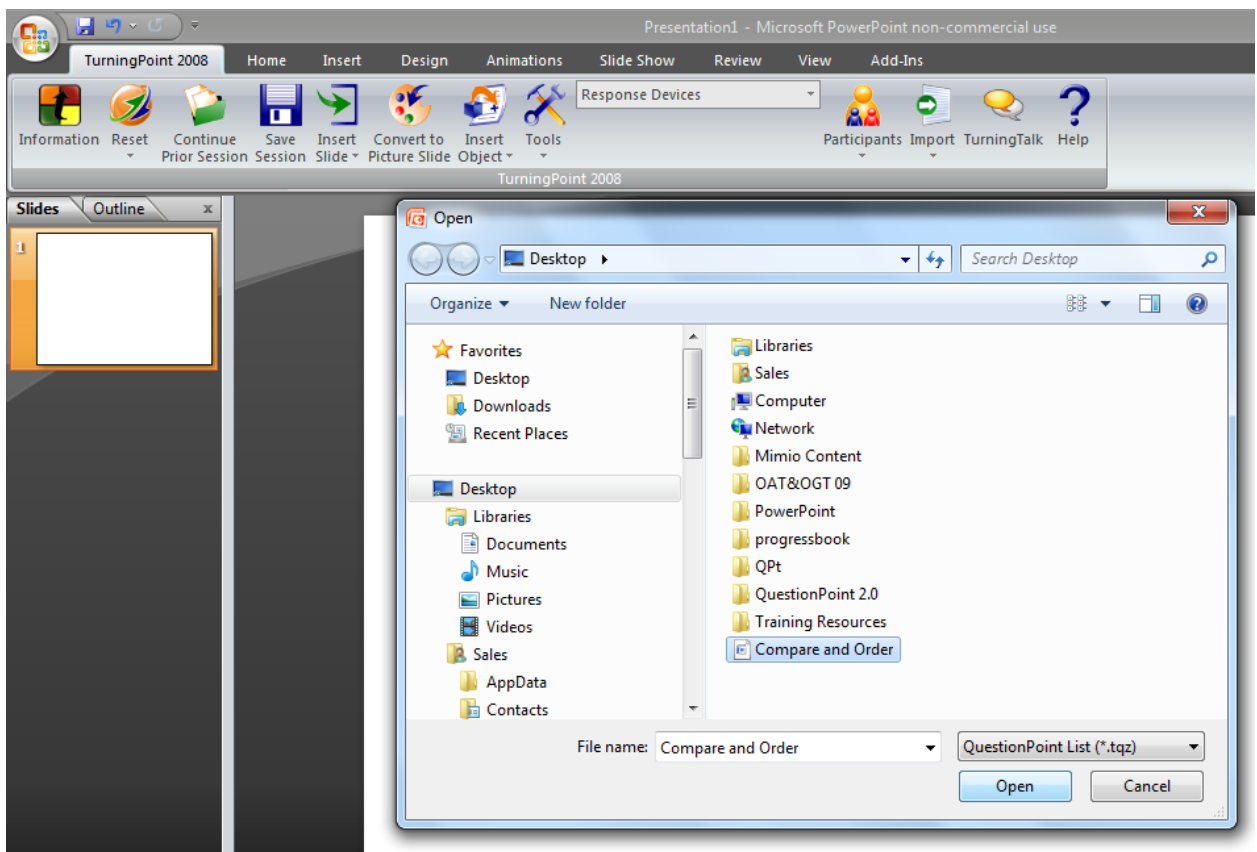


Using QuestionPoint with TurningPoint – PC

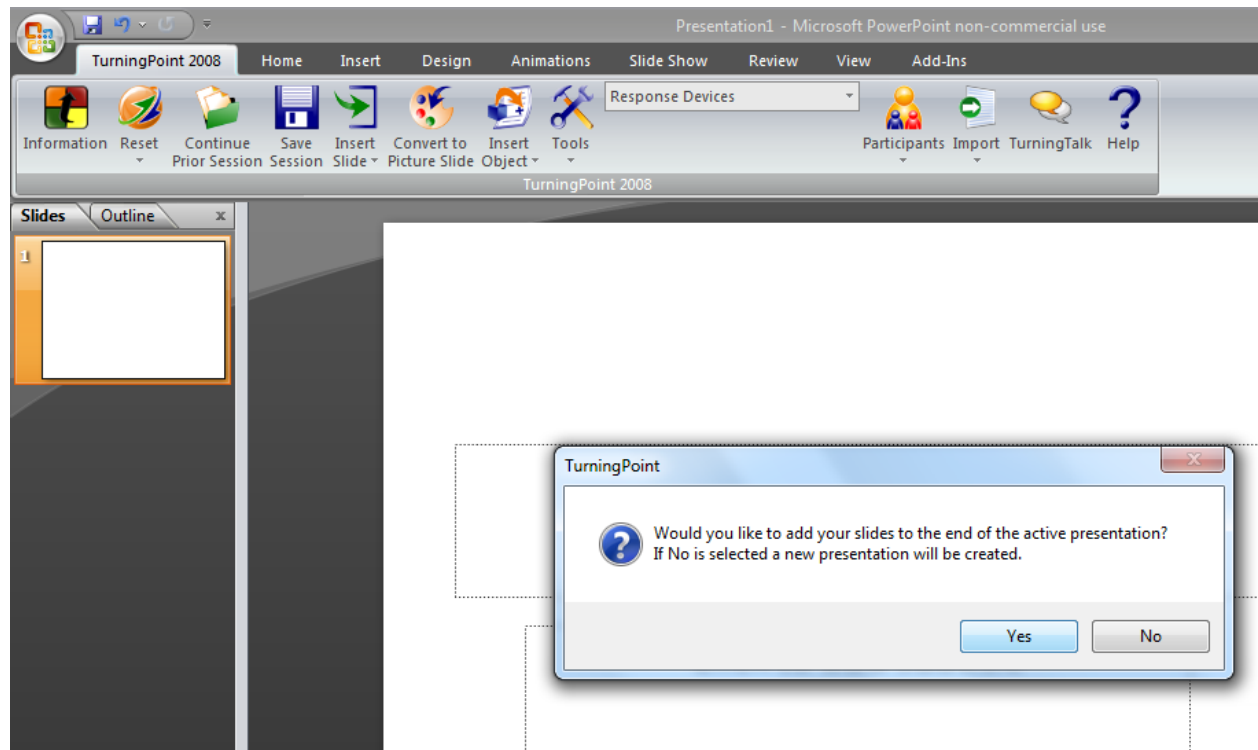
1. In TurningPoint, click the **Import** button, then choose **QuestionPoint**.



2. Navigate to your saved .tqz file and click **Open**.



3. Select where you would like to place your questions.



4. Your QuestionPoint assessment items will be imported into your TurningPoint presentation.

The screenshot shows the TurningPoint 2008 software interface. The top menu bar includes 'TurningPoint 2008', 'Home', 'Insert', 'Design', 'Animations', 'Slide Show', 'Review', 'View', and 'Add-Ins'. Below the menu is a toolbar with icons for 'Information', 'Reset', 'Continue Prior Session', 'Save Session', 'Insert Slide', 'Convert to Picture Slide', 'Insert Object', 'Tools', 'Response Devices', 'Participants', 'Import', 'TurningTalk', and 'Help'. The main area displays a presentation slide with a blue background. The slide content includes a table titled 'Population of Four Cities', a text box asking 'Which city has the greatest number of people living there?', and a bar chart showing the population of four Florida cities. The sidebar on the right contains 'Session Options', 'Participant List', 'Default Point Values', and 'Answer Values'.

City	Population
Gainesville	95,447
Tallahassee	150,623
Boca Raton	74,764
Coral Gables	42,249

The table below shows the number of people living in four Florida cities.

Which city has the greatest number of people living there?

1. Gainesville
2. Tallahassee
3. Boca Raton
4. Coral Gables

25% 25% 25% 25%

Gainesville Tallahassee Boca Raton Coral Gables

Note: If any of your assessment items contain answers with multiple images or images with text, you may need to manually format the placement of images.